

DIGIOP® Control enables centralized configuration of systems, devices, users, and permissions. It is a web-based administration portal that allows you to manage your video and data from anywhere. For additional information about installing and using DIGIOP® Control, refer to the *DIGIOP® Control V9.0 Software User Manual*.

DIGIOP® Control is used together with DIGIOP® Connect, the remote client that enables you to view live video, download recordings, monitor data sources, and export video and data.

1 Installation

NOTE If you purchased a factory configured DIGIOP® system, DIGIOP® server and the client, DIGIOP® Connect, were preinstalled.

Before installing DIGIOP® server, ensure that your server hardware and the remote PCs for DIGIOP® Connect meet the following requirements.

DIGIOP® server minimum requirements:

- **CPU:** Intel® Core™ i3 or equivalent processor (Core™ i7 recommended)
- **RAM:** 4GB RAM (8GB or more recommended)
- **HDD:** 250GB, 7200 RPM (add additional HDDs for more storage space)
- **Video Card:** 256MB (or better)
- **OS:** Microsoft® Windows 7 Professional or better (64 bit operating system preferred). DIGIOP® server also runs on Microsoft® Windows 8/8.1, Server 2008, Server 2012.

Remote PC for DIGIOP® Connect minimum requirements:

- **CPU:** Intel® Core™ i3 or equivalent processor (Core™ i7 recommended)
- **RAM:** 4GB (8GB or more recommended)
- **HDD:** 250GB 7200 RPM (add additional HDDs for more storage space)
- **Video Card:** 256MB (or better)
- **OS:** Microsoft® Windows XP Professional (Windows 7 with 64-bit OS preferred). DIGIOP® Connect also runs on Microsoft® Windows 8/8.1, Server 2008 and Server 2012.

DIGIOP® is capable of operating on systems with lower specifications, but this is highly dependent upon number of cameras, camera resolution, and recorded frame rates. Contact us to determine the optimal specifications for your project.

There are two installer file versions:

- **DigiopServer_Web.exe** (web installer, recommended for most installations)
- **DigiopServer_Full.exe** (full Installer, needed if system does not have access to the internet):

If you purchased the DIGIOP® Software Only product, an installer is included on the flash media drive you received with your purchase. If not, the installer can be downloaded from digiop.com.

To install the DIGIOP® server software:

1. Locate the appropriate installation file to your system and then copy it to your server hardware.
2. Install DIGIOP® server as you would install most Windows applications. During the installation process, DIGIOP® Prerequisite Manager will install essential software components, such as Microsoft® SQL Server, if needed.

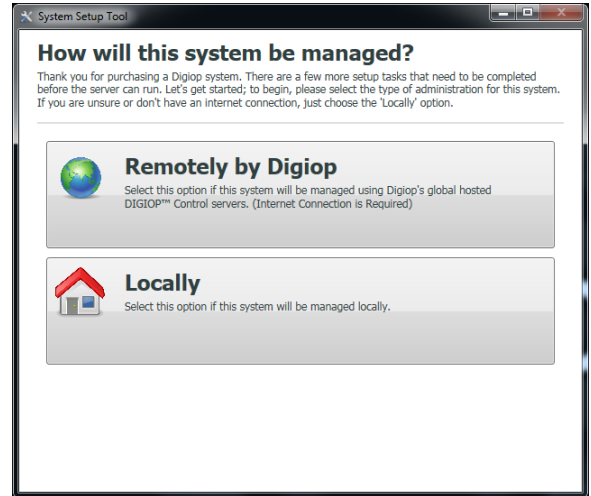
After installing the DIGIOP® server software and configuring DIGIOP® Control, install DIGIOP® Connect. Refer to the *DIGIOP® Connect V9.0 Quick Start Guide* for instructions.



2 Initial system startup

After installing the server software, or when starting a DIGIOP factory pre-configured system for the first time, the DIGIOP System Setup Tool will open a window requesting how the system is to be managed:

- **Remotely by DIGIOP** (DIGIOP ELEMENTS™): The system will be hosted by DIGIOP ELEMENTS™.
 - You must request a DIGIOP ELEMENTS™ customer name and account before proceeding with system startup. Visit **digiop.com** to request an account.
 - System configuration data is saved in the cloud. The server must have internet access.
 - The system Notifications feature is available. Notifications can be configured to alert users when video loss, system offline, and system not recording events occur in the system.
- **Locally**: The system will be hosted by your DIGIOP server system.
 - All system configuration data is saved on the DIGIOP server.



Click one of the management options to continue.

For additional instructions to complete the system setup, including adding licences, refer to the *DIGIOP® Control V9.0 User Manual*.

NOTE: If the server system will be hosted by DIGIOP ELEMENTS™, an Internet connection is required.

3 Log into DIGIOP® Control

The DIGIOP® Control web administration tool is accessed using an Internet browser (Microsoft® Internet Explorer®, Mozilla® Firefox®, or Google® Chrome™). How you log into the DIGIOP Control depends on whether the system is hosted locally or by DIGIOP ELEMENTS™, and whether you are logging on from the server or remotely.

For systems managed by DIGIOP ELEMENTS™:

- Open an internet browser on a computer that has Internet access.
- Go to the URL: <http://elements.digiop.com>

NOTE If using Internet Explorer, after opening the URL click the **Tools** icon in the browser header, open the **Compatibility View settings** menu, and then add digiop.com to the list.

- Enter the *Username*, *Password* and *Customer* names assigned by DIGIOP, and then click **Login**.

To login to DIGIOP Control from the server (system locally managed):

- Open Internet Explorer by clicking the icon on the task bar. By default, the browser will open the URL: <http://localhost/Digiop/account..>
- Enter the *Username/Password* assigned to you (if this a first time login, use the default *Username* and *Password*: **admin** and **admin**). In the *Customer* field, enter **digiop**.
- Click **Login**.



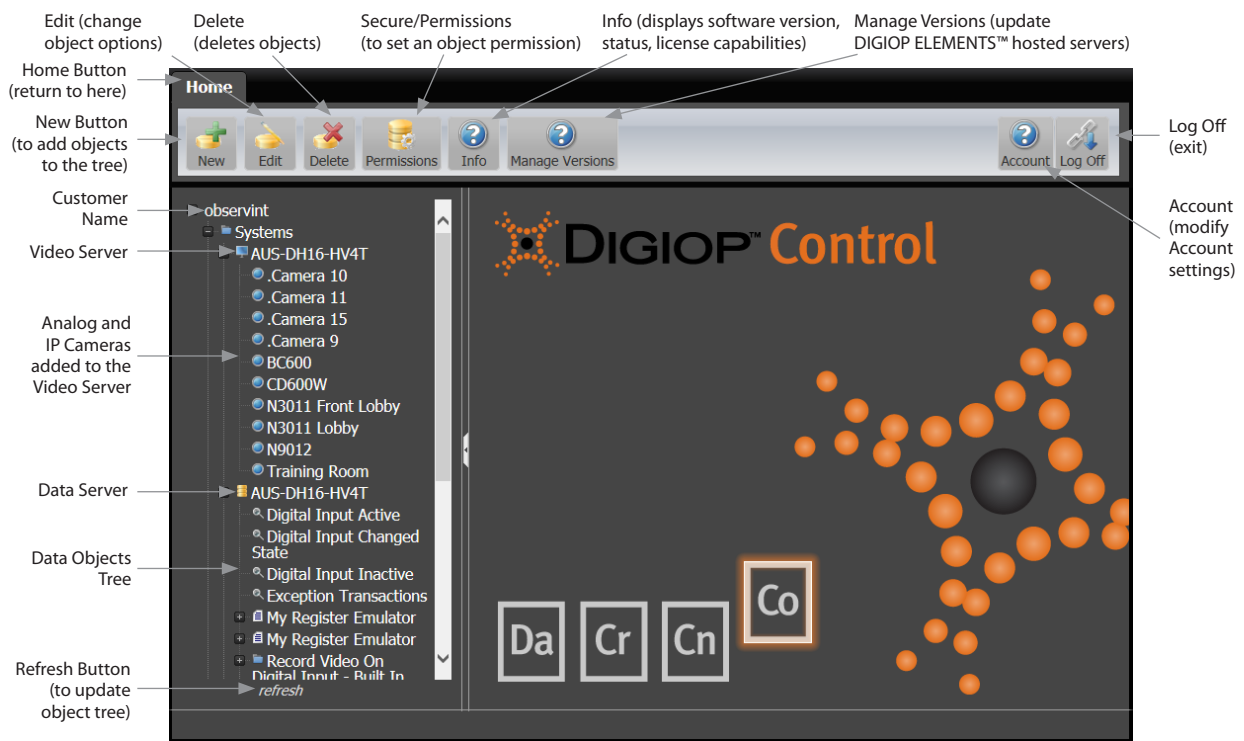
To login to DIGIOP® Control (system locally managed) from a computer on the local network:

- Open an internet browser on a computer that can connect to the server across a LAN.
- Go to the URL: <http://<ip address of DIGIOP Server>/digiop>. Example: <http://192.168.5.43/digiop>

NOTE If using Internet Explorer, after opening the URL click the **Tools** icon in the browser header, open the **Compatibility View settings** menu, and then add digiop.com to the list.

- Enter the *Username/Password* assigned to you (if this a first time login, use the default *Username* and *Password: admin* and **admin**). In the *Customer* field, enter **digiop**.
- Click **Login**.

DIGIOP® Control

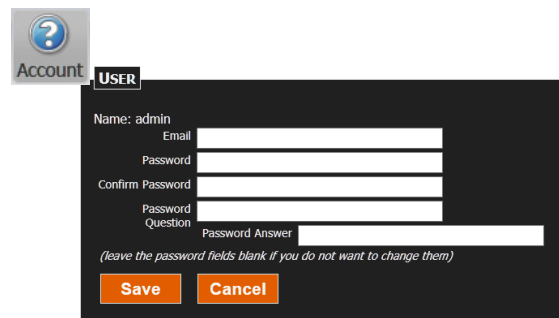


4 Change default admin password

For added security of your server, it is strongly recommended that the default **admin** username password be changed during the initial system setup:

- Login to DIGIOP Control as the **admin** user.
- Click the Account icon at the top of the window to open the User menu.
- In the **User** menu, enter a new password in the **Password** and **Confirm Password** fields, then click **Save**.


NOTE Lost passwords cannot be recovered. If you change the **admin** password, copy it to a secure location.

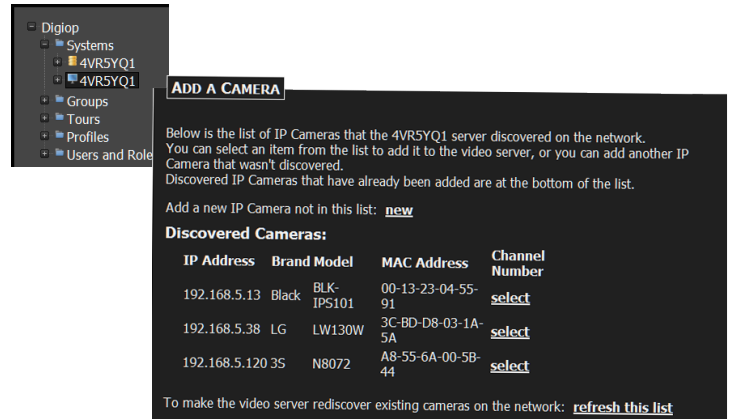




5 Add IP auto-discovered cameras to Control

IP cameras may be auto-discovered or auto-configured.

- Double click the **Systems** branch in the left pane, then click the **Video Server** icon () to select it.
- Click the **New** button at the top of the window.
- In the **Add a camera** menu, click the **select** link for the camera you want to add.
- In the **Camera** menu, change the settings if necessary, then click **Save**.
- Repeat this procedure for other auto-discovered cameras.




The screenshot shows the 'ADD A CAMERA' dialog box. On the left is a tree view with 'Systems' expanded to '4VRSYQ1'. The main area contains text: 'Below is the list of IP Cameras that the 4VRSYQ1 server discovered on the network. You can select an item from the list to add it to the video server, or you can add another IP Camera that wasn't discovered. Discovered IP Cameras that have already been added are at the bottom of the list.' Below this is a table of discovered cameras:

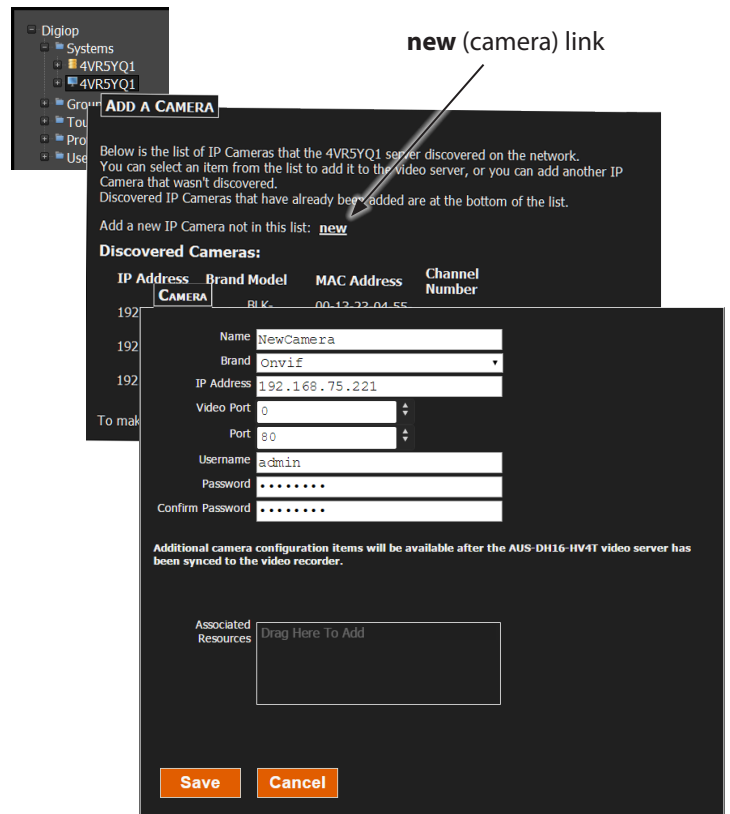
| IP Address | Brand | Model | MAC Address | Channel Number |
|---------------|-------|------------|-------------------|------------------------|
| 192.168.5.13 | Black | BLK-IPS101 | 00-13-23-04-55-91 | select |
| 192.168.5.38 | LG | LW130W | 3C-BD-D8-03-1A-5A | select |
| 192.168.5.120 | 3S | N8072 | A8-55-6A-00-5B-44 | select |

At the bottom, it says 'To make the video server rediscover existing cameras on the network: [refresh this list](#)'.

6 Add IP cameras manually

IP cameras may be added manually to Control.

- Double click the **Systems** branch in the left pane, then click the **Video Server** icon () to select it.
- Click the **New** button at the top of the window.
- In the **Add a camera** menu, click the **new** link to add a camera that is not in the list.
- In the **Name** field, enter a name for the camera.
- In the **Brand** field, open the drop-down list and select the brand of the camera you are adding. If the camera is *Onvif* compatible, you can select **Onvif**. See the example to the right.
- In the IP Address field, enter the address for the camera.
- Enter **Video Port** and **Port** the camera is using. Refer to the camera documentation for the correct settings.
- In the **Username**, **Password** and **Confirm Password** fields, enter the administrator username and password for the camera you are adding.
- Click **Save** to add the camera to Control.



The screenshot shows the 'ADD A CAMERA' dialog box with the 'new (camera) link' highlighted. The main area contains text: 'Below is the list of IP Cameras that the 4VRSYQ1 server discovered on the network. You can select an item from the list to add it to the video server, or you can add another IP Camera that wasn't discovered. Discovered IP Cameras that have already been added are at the bottom of the list.' Below this is a table of discovered cameras:

| IP Address | Brand | Model | MAC Address | Channel Number |
|--------------|-------|------------|-------------------|----------------|
| 192.168.5.13 | Black | BLK-IPS101 | 00-13-23-04-55-91 | |

Below the table is a form for adding a new camera:

Name:

Brand:

IP Address:

Video Port:

Port:

Username:

Password:

Confirm Password:

Additional camera configuration items will be available after the AUS-DH16-HV4T video server has been synced to the video recorder.

Associated Resources:

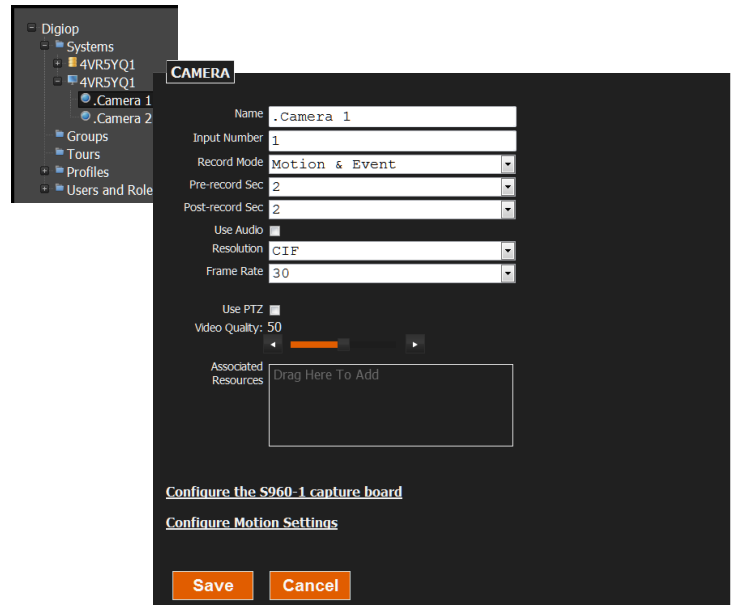
Buttons: **Save** **Cancel**



7 Add analog cameras to Control (DH and DM series systems)

Analog cameras are auto-discovered and assigned to the video channel they are physically connected to.

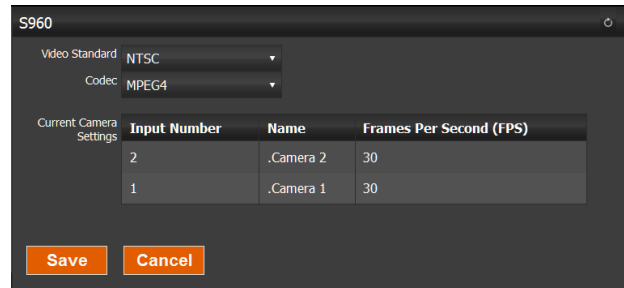
- Double click the **Systems** branch in the left pane, then double click the video server icon to expand it. By default, analog cameras are named **.Camera 1** (for channel 1), **.Camera 2** (for channel 2), etc.
- Select the camera you want to edit, then click the **Edit** button.
- In the **Camera** menu, change the settings if necessary, then click **Save**.
- Repeat this procedure for other auto-discovered analog cameras.



8 Configure the capture board (DH and DM series systems)

Video from analog cameras connect to the video capture board. The window at the right shows the menu for the AH4032 S960 capture board, which is similar to capture boards in other DIGIOP® systems.


- Double click the **Systems** branch in the left pane, then double click the **Video Server** "+" sign to expand it.
- Click any analog camera listed under the video server icon to select it, then click the **Edit** button.
- In the **Camera** menu, click **Configure the <type> capture board**.
- Change the capture board settings if necessary, then click **Save**.



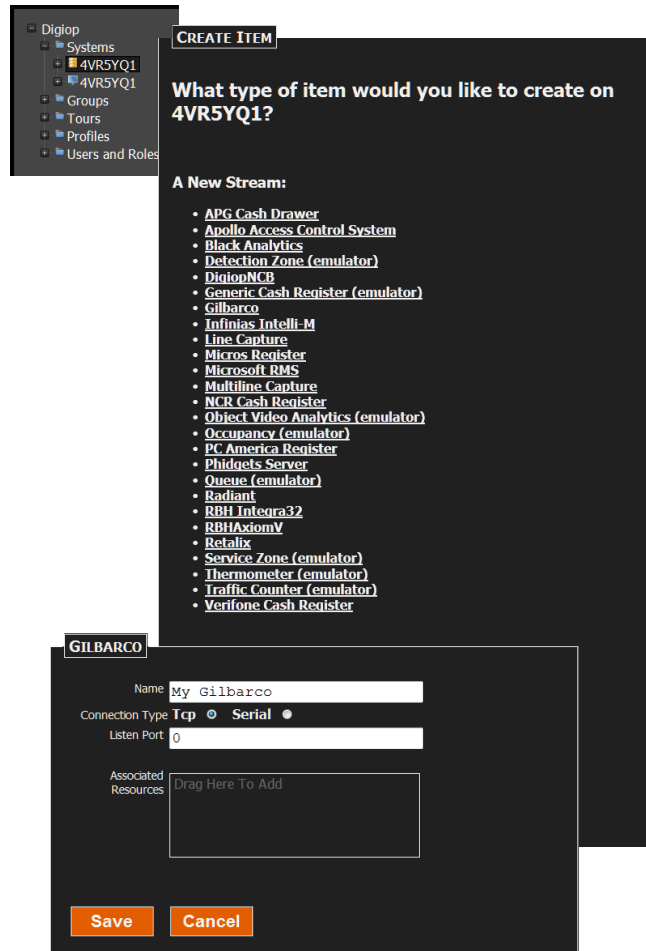


9 Add a data stream to Control

Data streams are added to the Data server. The DIGIOP® Control includes presets for common data streams, including real sources and emulators. To add a data stream:

- Double click the Systems branch in the left pane, then click the **Data Server** icon () to select it.
- Click the **New** button at the top of the window.
- In the **Create Item** menu, click the preferred **New Stream**. The options screen for the data stream selected will open. In the example used here, the Gilbarco Cash Register option was selected.
- In the edit menu for the Gilbarco register, set the options as needed, then click **Save**.

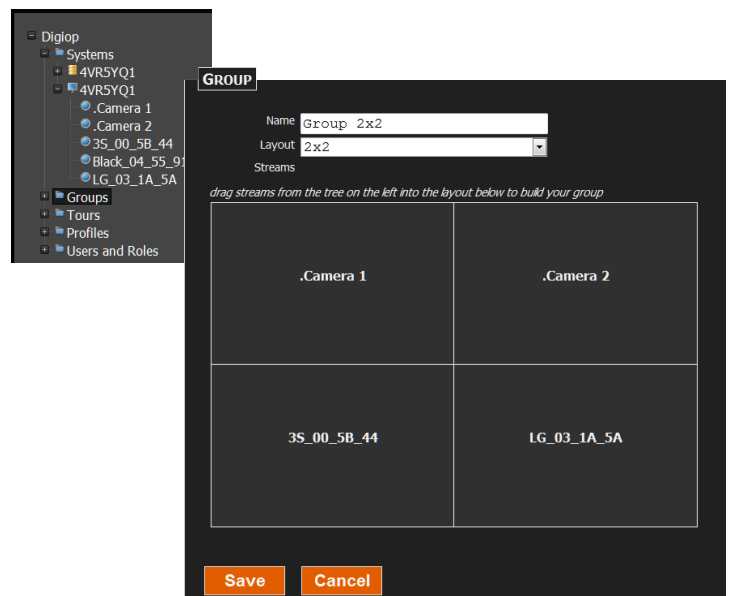
NOTE Some data streams may require additional licensing. For additional information about data streams, including data stream types and options, and setting up Rules, refer to the *DIGIOP® Control V9.0 User Manual*.



10 Create a Group

A group is a collection of cameras and/or data streams that can be displayed in a single window with DIGIOP® Connect. To create a group:

- Click the **Group** object in the tree to select it.
- Click the **New** button at the top of the window.
- In the **Group** menu:
 - Edit the Name field to identify your group.
 - Click the down arrow in the Layout field and select the viewing frame layout for your group. In the example to the right, a 2x2 frame layout was selected.
 - Drag a data or video stream created in the **Data Server** or **Video Server** branches to a frame in the layout. Repeat to add other cameras or data streams.
- Click **Save**.

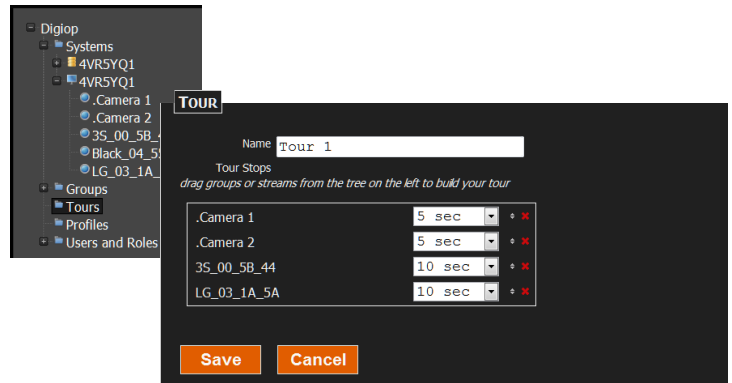




11 Create a Tour

A tour is a collection of cameras, data streams or data elements, or groups that play sequentially and indefinitely within DIGIOP® Connect. You can set the dwell time from 1 second to 5 minutes for each item in the tour. To create a tour:

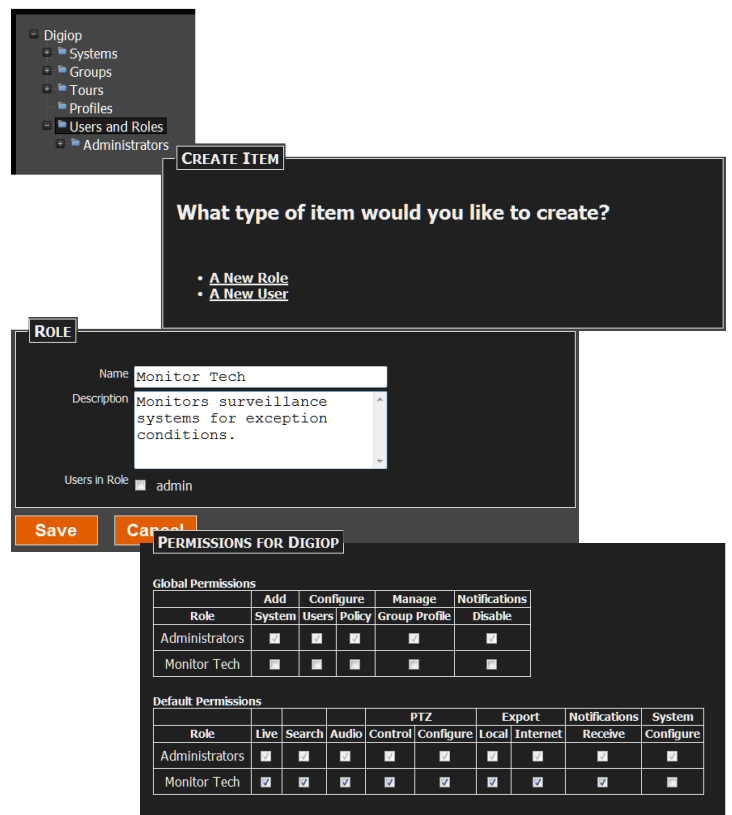
- Click the **Tour** object in the tree to select it.
- Click the **New** button at the top of the window.
- In the **Tour** menu:
 - Edit the Name field to identify the tour.
 - Drag cameras, data streams or groups to the box in the Tour menu. Repeat to add other items.
 - Use the up and down arrows to change the order of the items in the tour.
 - For each item added, click the drop down arrow to select the dwell time for the item.
- Click **Save**.



12 Create a Role and Permissions

A Role is a named set of system permissions assigned to users that allow them to perform a specific job function. By default, DIGIOP® Control contains the Administrator role, which includes all configurable permissions. Additional Roles, each with any combination of permissions, can be created for each type of system user. Refer to the *DIGIOP® Control V9.0 User Manual* for more information. To create a role:

- Click the **Users and Role** object in the left pane to select it.
- Click the **New** button at the top of the window.
- In the **Create Item** menu, click **A New Role**.
- In the **Role** menu, enter a **Name** for the role. You can also enter a description if needed.
- Click **Save** to create the role.
- Click the **Customer Name** in the left frame at the top of the tree. In the examples shown here, the Customer Name is **Digiop**.
- Click the **Permissions** icon at the top of the window.
- For the Monitor Tech role, click the checkboxes to select permissions to assign to the role.
- Click **Save**.





13 Create a User

A user represents a login credential with a specific role (set of permissions). To create a User:

- Click the **Users and Role** object in the tree to select it.
- Click the **New** button at the top of the window.
- In the **Create Item** menu, click **A New User**.
- In the **User** menu, enter a **Name**, **Email** address, **Password** and **Confirm Password**, and a **Password Question** and **Password Answer**. You can also enter a **Comment** for the user.
- Select the Role for this user. In the example to the right, select either **Administrators** or **Monitor Tech**.
- Click **Save**.

Digiop
Systems
Groups
Tours
Profiles
Users and Roles
Administrators

CREATE ITEM

What type of item would you like to create?

- A New Role
- A New User

USER

Name Henry
Email
Password
Confirm Password
Password Question Who am I?
Password Answer Henry
Comment

Roles Administrators
 Monitor Tech
(leave the password fields blank if you do not want to change them)

Save Cancel

14 Configure Notifications

Systems hosted by DIGIOP® include the Notifications feature, which reports certain server events to the user through DIGIOP® Connect. Notifications are configured through DIGIOP® Control and apply to all servers under the Customer name. To configure Notifications:

- Click the **Customer** name object in the left pane to select it. The Customer name is at the top of the object list. In the example to the right, the Customer name is **Digiop**.
- Click the **Edit** button at the top of the window.
- In the menu that opens in the right pane, select or deselect the system events you want reported.
- Click **Save**.

Digiop
Systems
Groups
Tours
Profiles
Users and Role

CONFIGURE SYSTEM

SELECT EVENTS TO TRIGGER NOTIFICATIONS

- Not Recording
- System Offline
- Video Loss

Select All Clear All

Save Cancel

NOTE For additional information about using DIGIOP® Control, refer to the *DIGIOP® Control V9.0 User Manual*.



15 View video, Notifications and data from the Server

To view video, Notifications, and data from your server, use DIGIOP® Connect. Refer to the *DIGIOP® Connect V9.0 Quick Start Guide* and *DIGIOP® Connect V9.0 Software User Manual* for more information.

